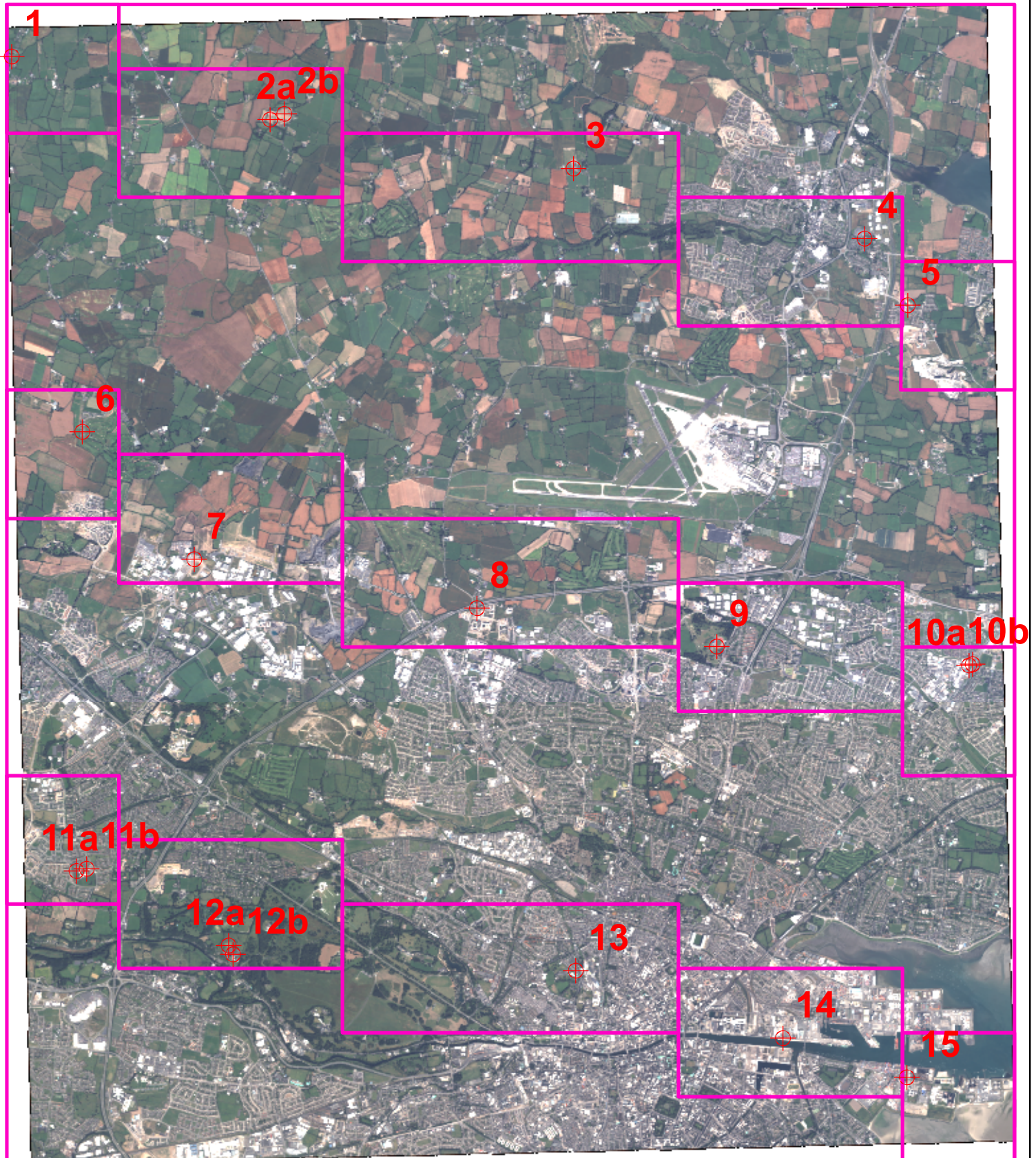
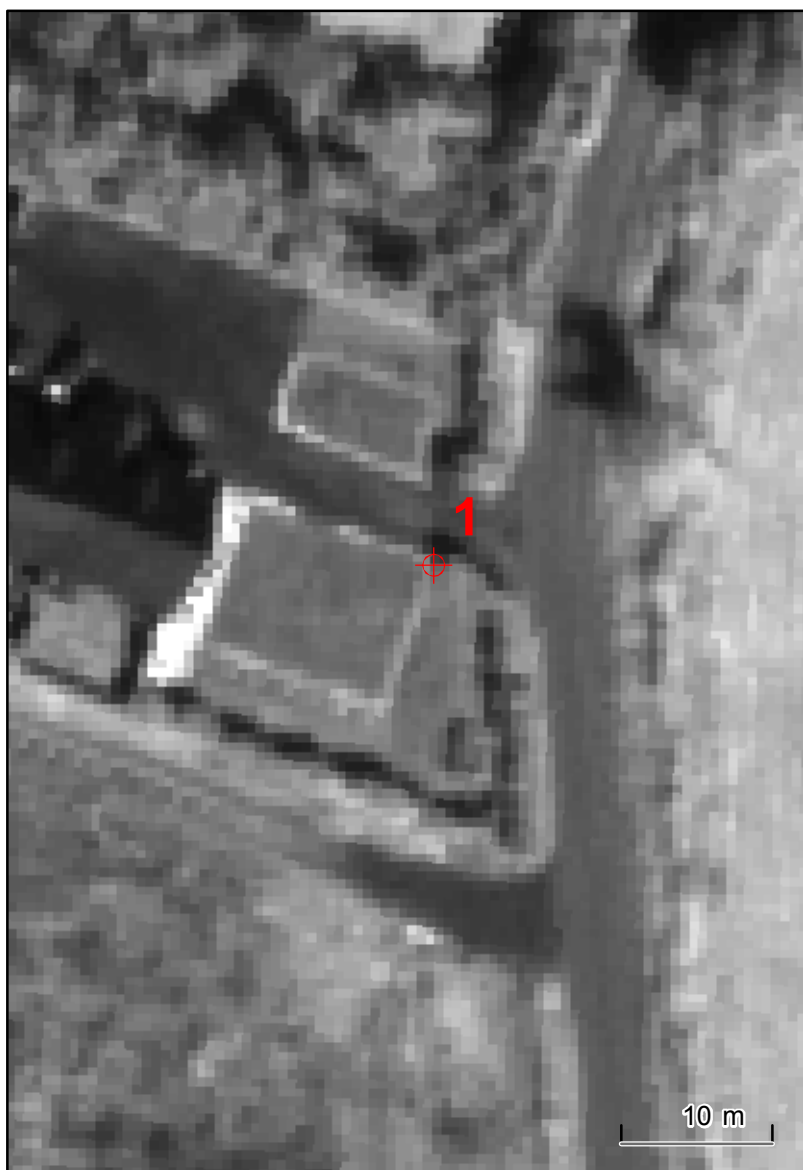


# QuickBird-04AUG2003

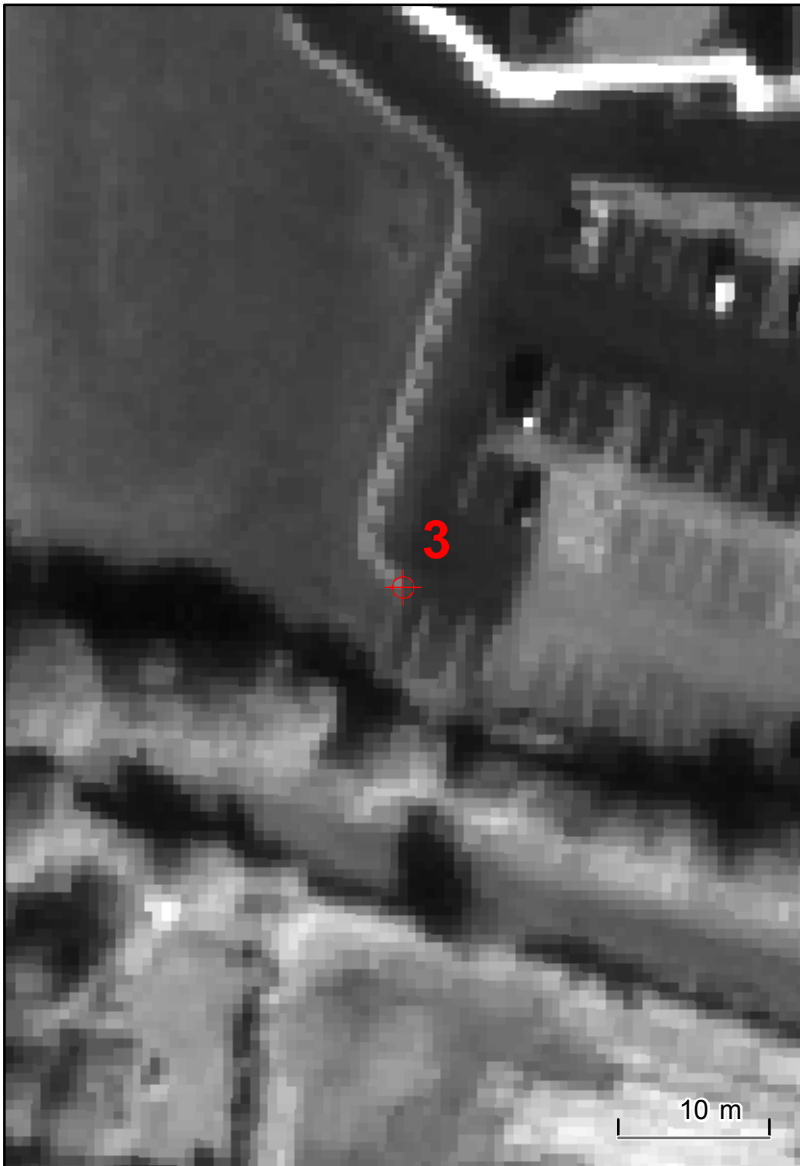
## Overview of the 15 proposed GPS points

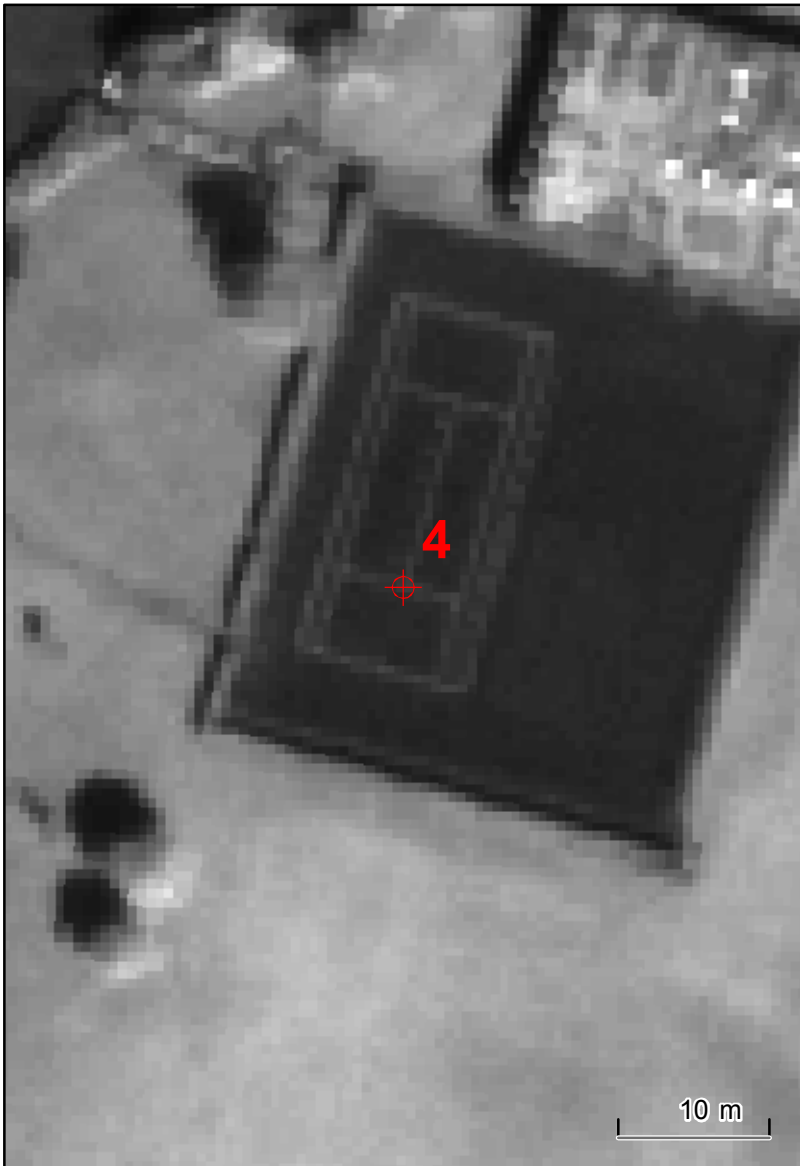


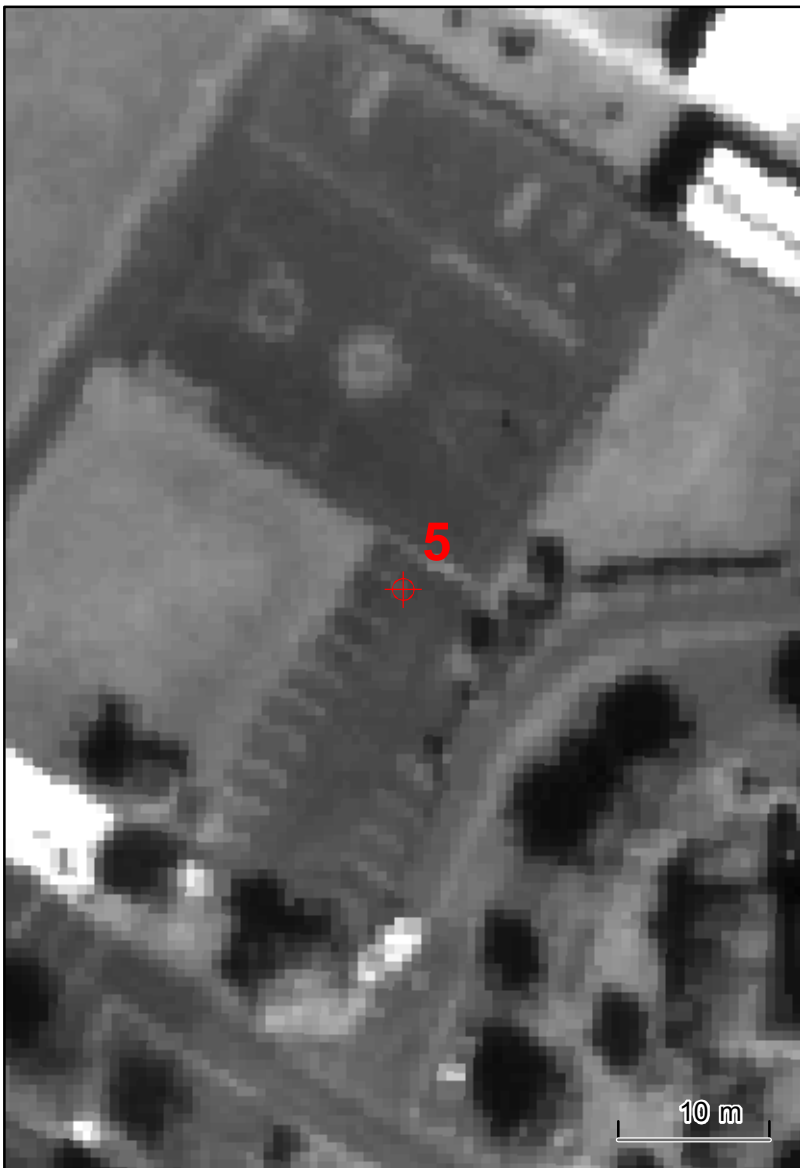
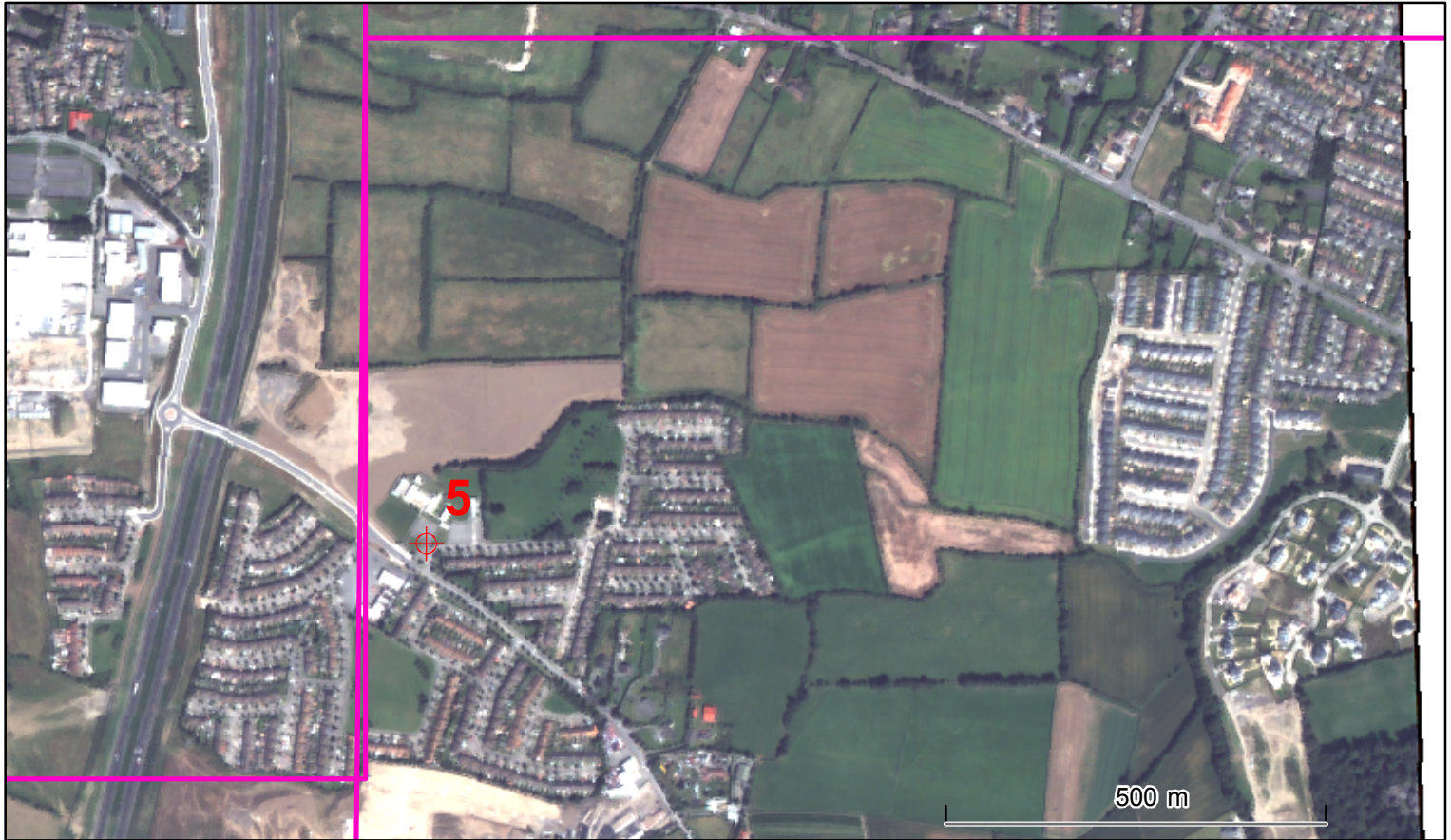
1 000 m

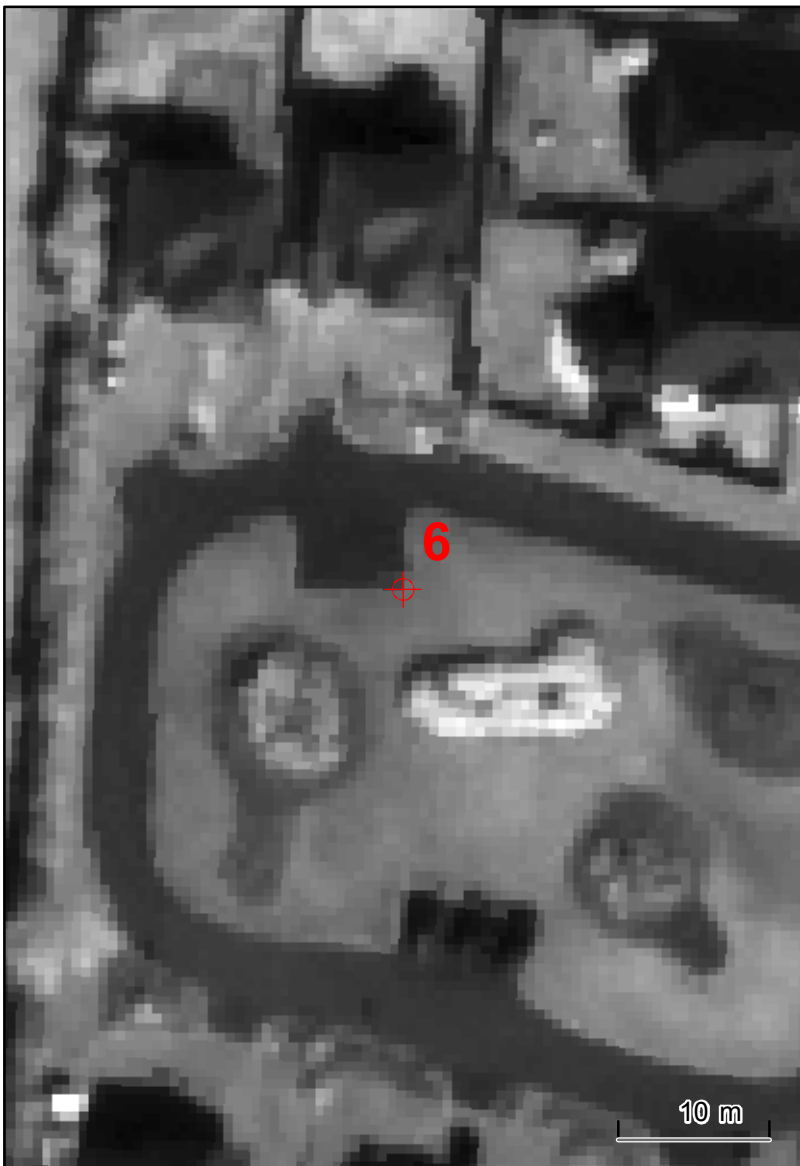


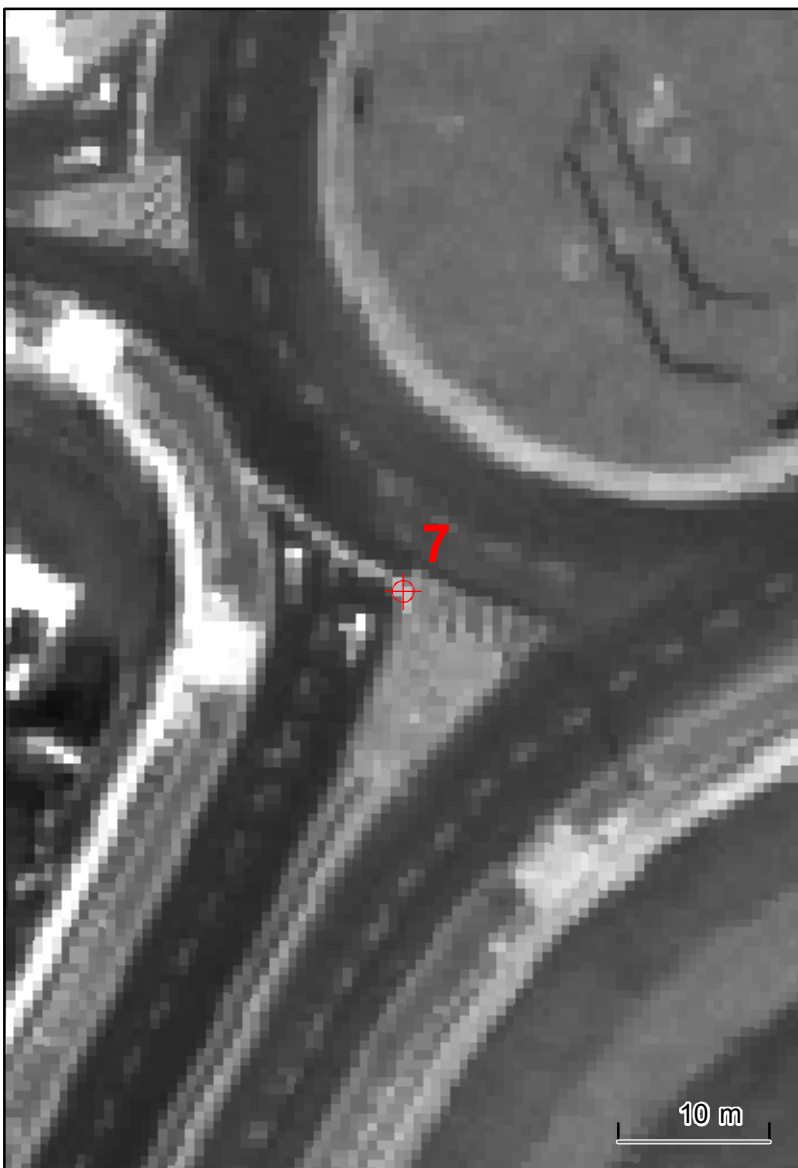
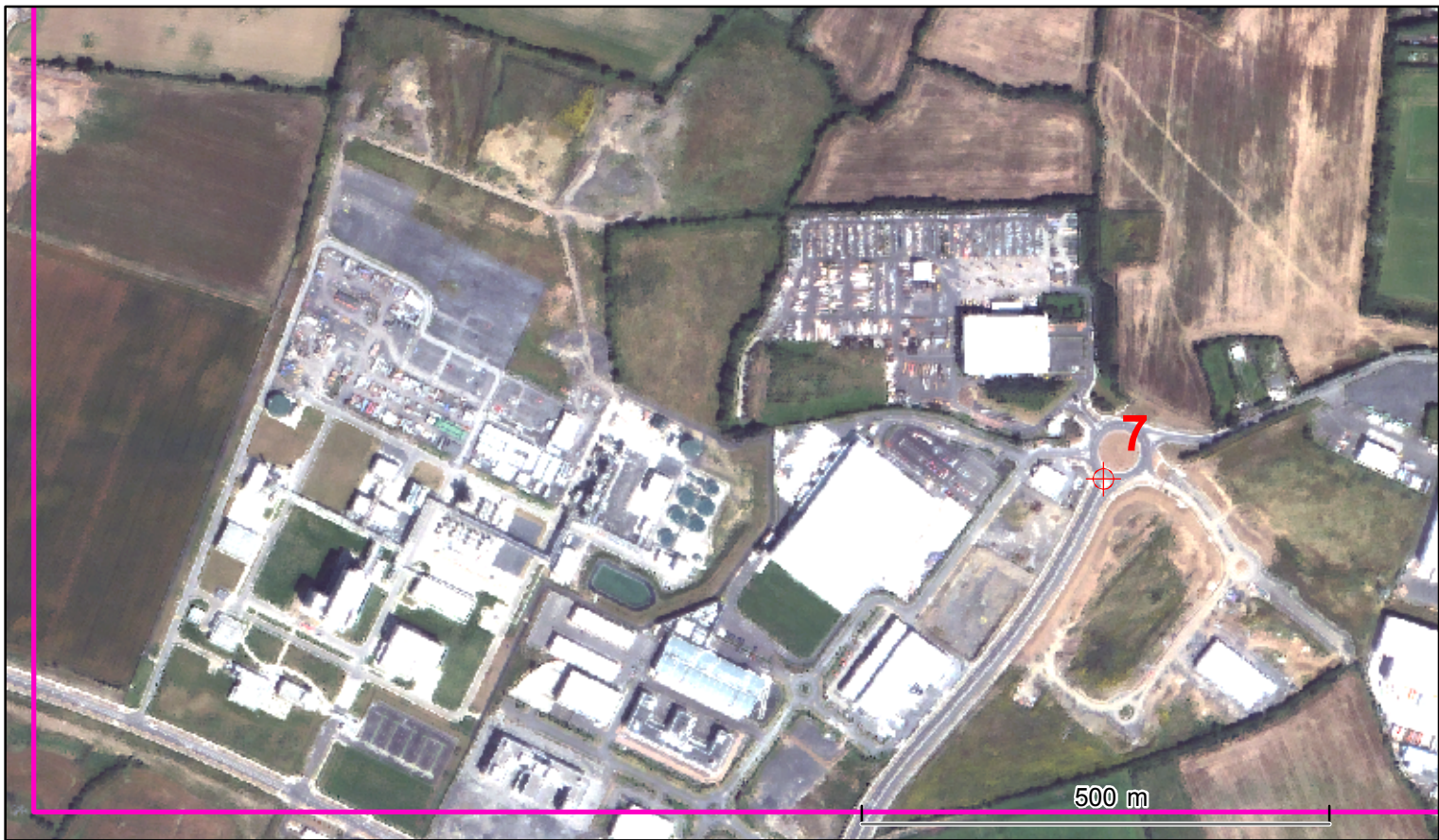








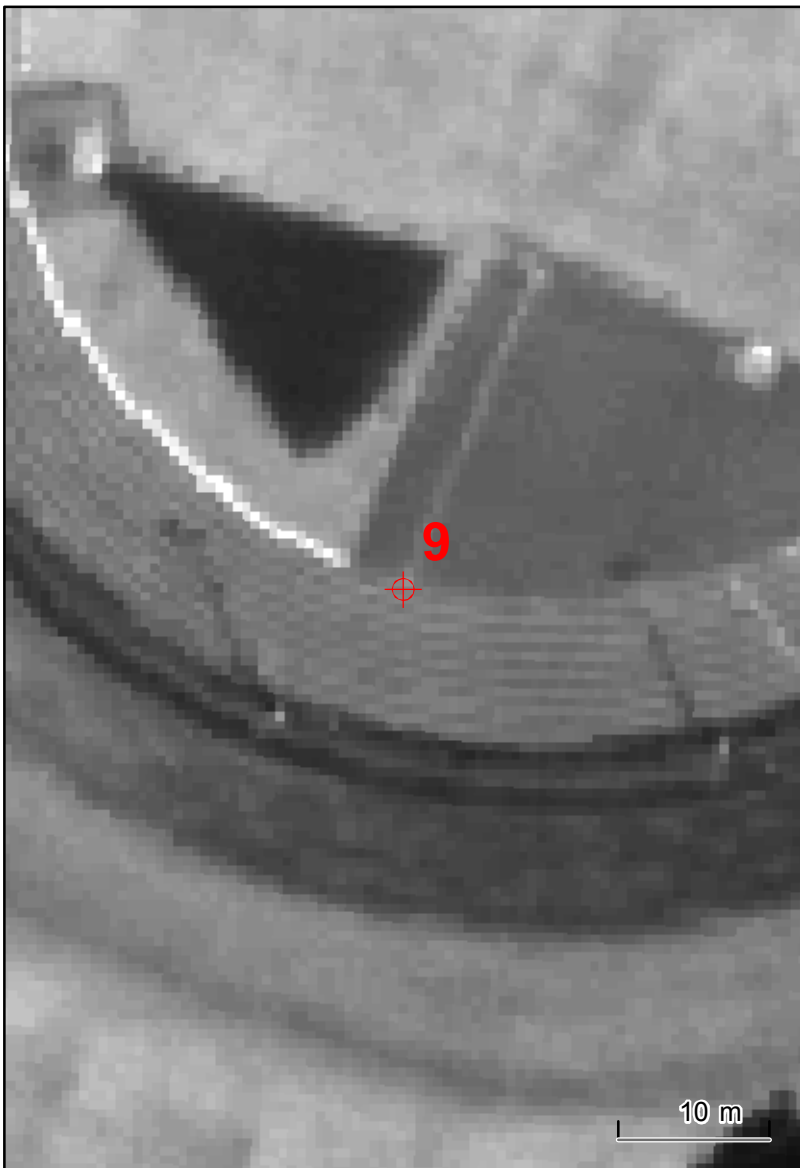


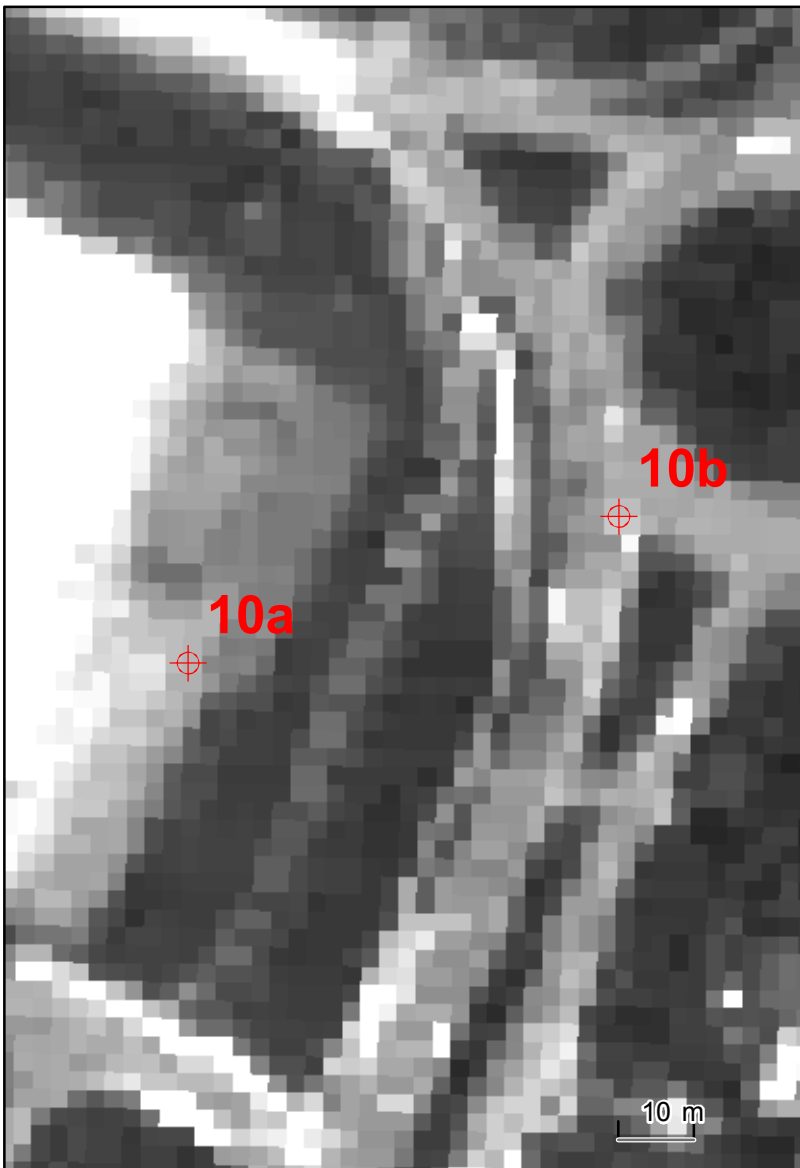


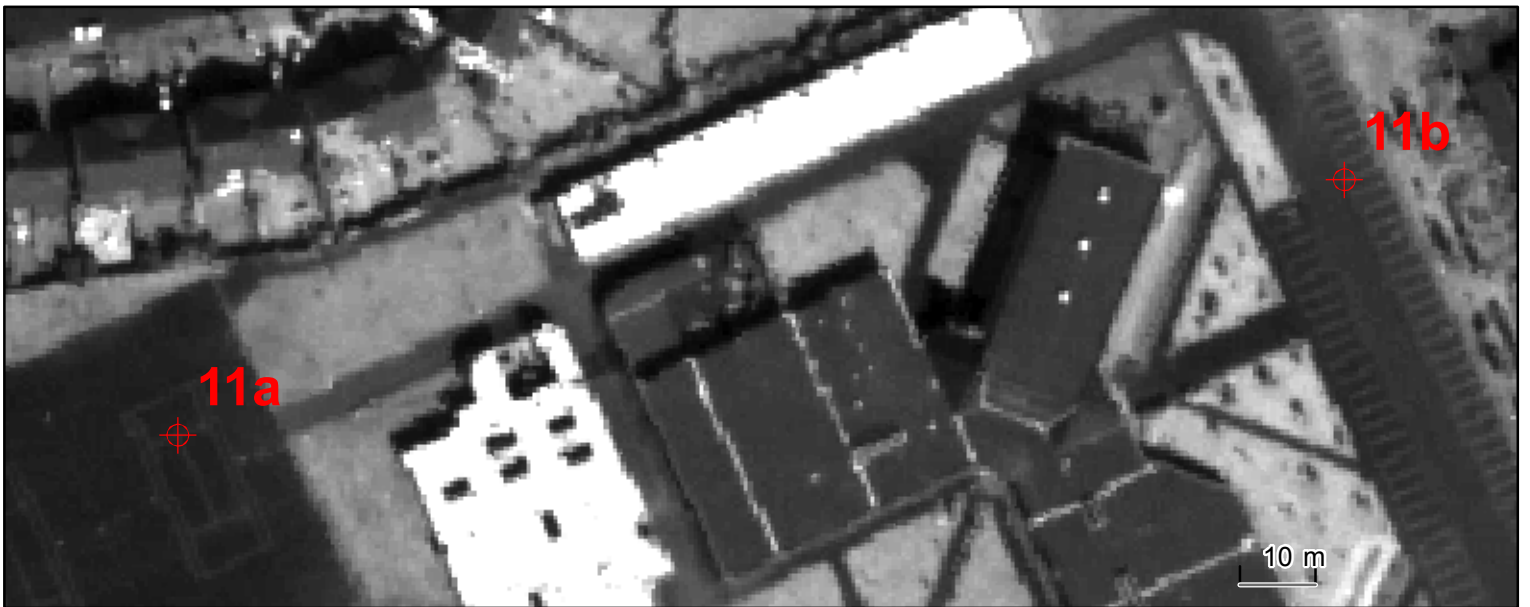


QuickBird - 04AUG2003 - GPS Point08 -  
Lanesborough: Roundabout of the St Margaret's Road









QuickBird - 04AUG2003 - GPS Point12 (a&b) -  
Convent and schools close to the crossing of Lower and Tower Roads and not far from the OSI Office



QuickBird - 04AUG2003 - GPS Point13 - At the crossing of Upper Grangegorman and Rathdown Road (close to the St. Brendan's Hospital)

