

Selection of LANDSAT scenes on Dublin
(Path: 206 Row: 23)

EURIMAGE : Landsat5 1988/01/21

Landsat5- **1988-06-13 (Free)**

EURIMAGE : Landsat5 1994/09/02

EURIMAGE : Landsat5 1997/09/10

EURIMAGE : Landsat5 1998/02/01

Landsat 7 ETM+720602300 0114450 **2001-05-24 (Free)**

Landsat 7 ETM+ 7206023000413751 2004-05-16

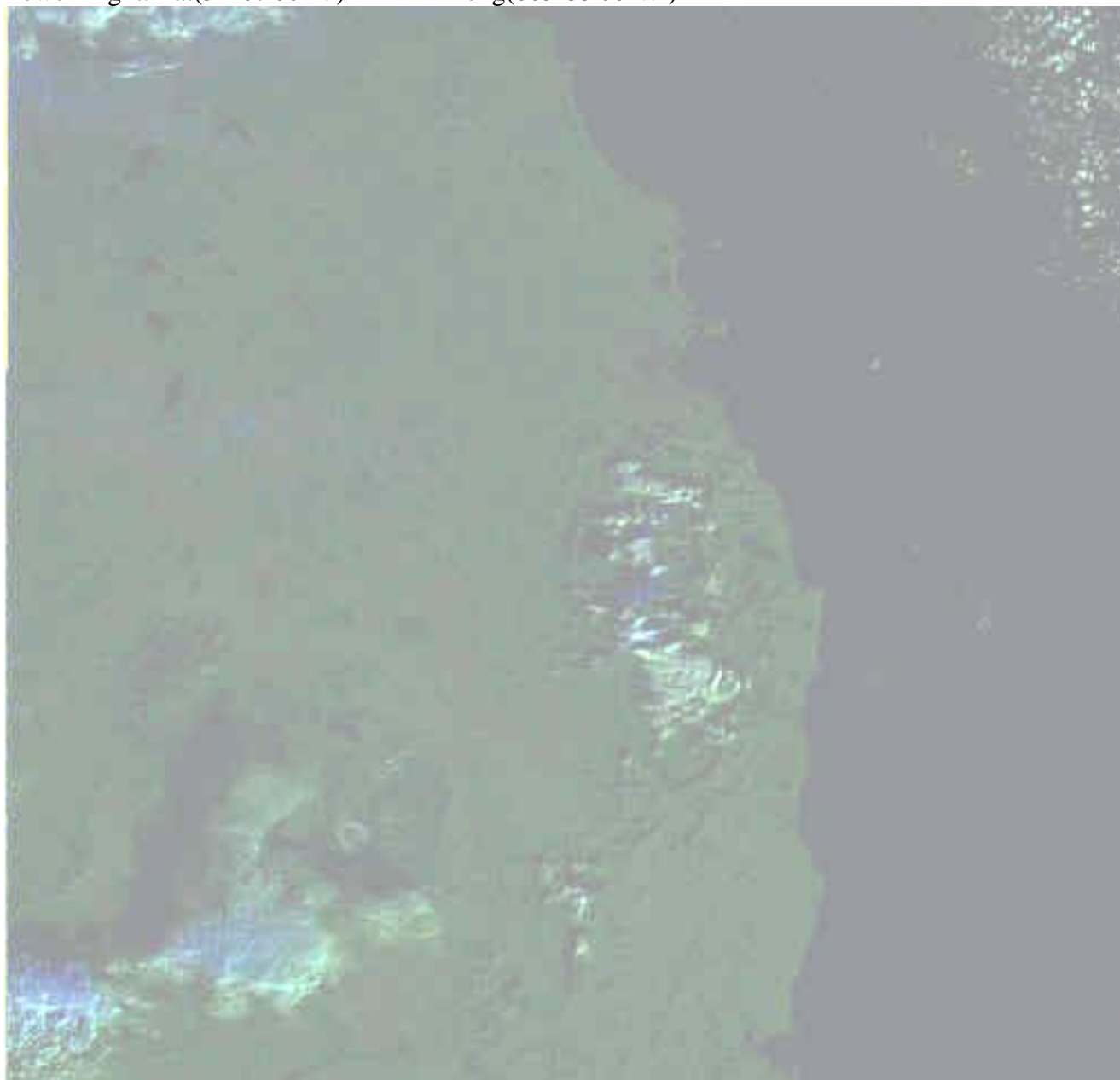
Landsat

Upper Left: Lat(54°03'00"N) Long(007°32'00"W)

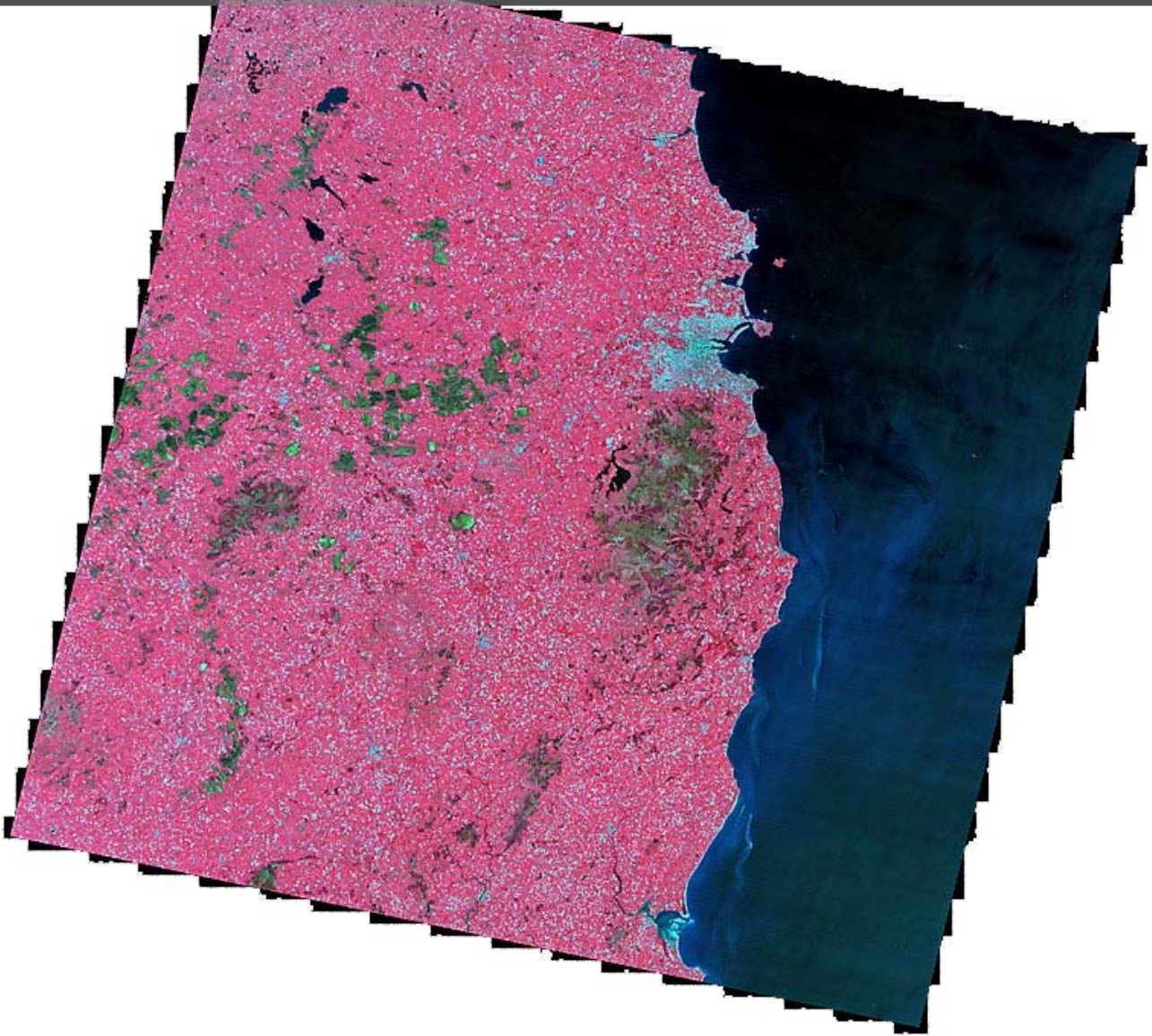
Upper Right: Lat(53°38'00"N) Long(004°49'00"W)

Lower Left: Lat(52°31'00"N) Long(008°13'00"W)

Lower Right: Lat(52°07'00"N) Long(005°35'00"W)



Global Land Cover Facility
<http://glcf.umiacs.umd.edu>



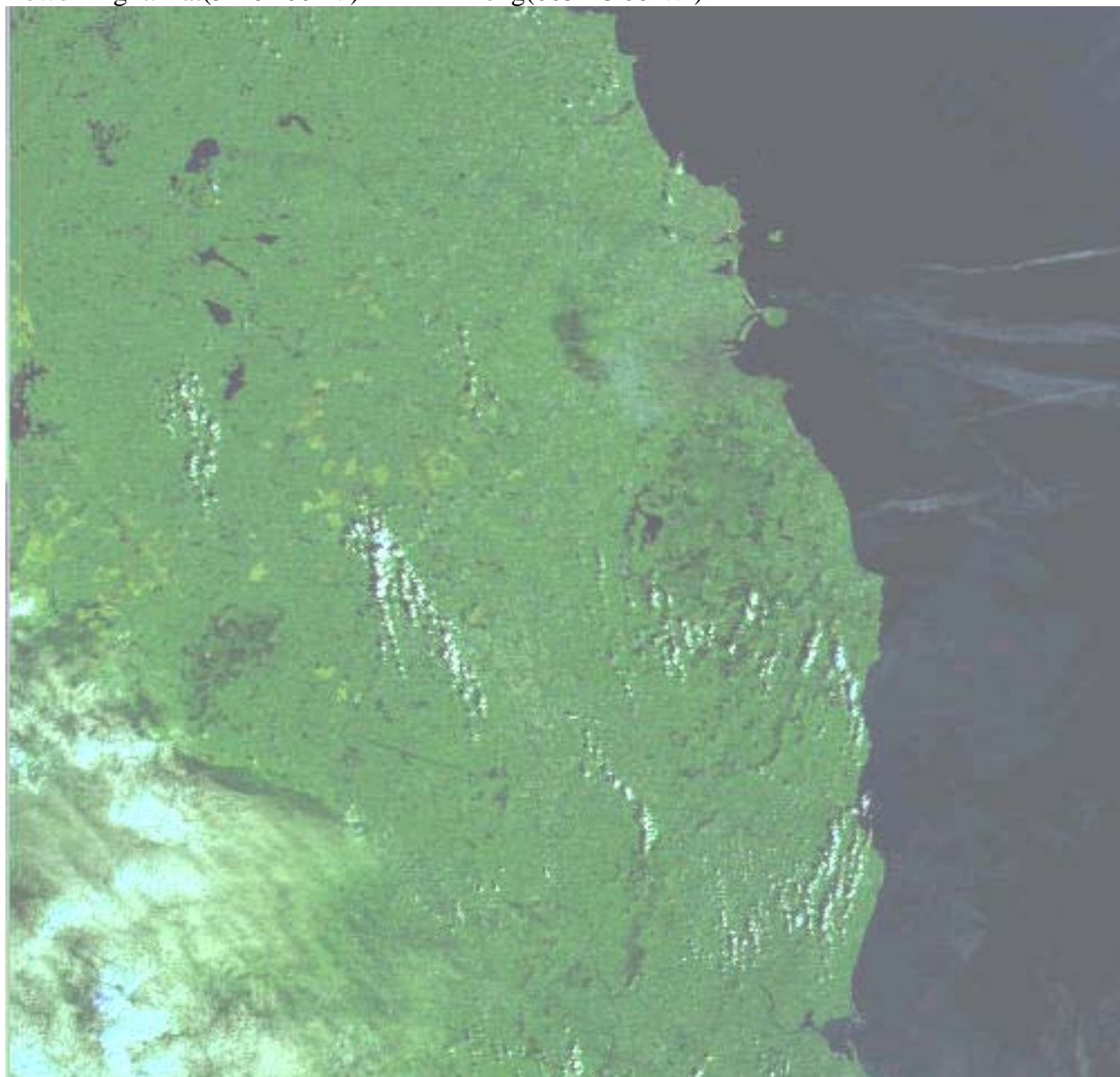
Landsat

Upper Left: Lat(54°09'00"N) Long(007°43'00"W)

Upper Right: Lat(53°44'00"N) Long(004°52'00"W)

Lower Left: Lat(52°28'00"N) Long(008°28'00"W)

Lower Right: Lat(52°04'00"N) Long(005°43'00"W)



EURIMAGE Path: 206 Row: 23 Date: **1997/09/10** Time: 10:55:09

Landsat

Upper Left: Lat(54°03'00"N) Long(007°30'00"W)

Upper Right: Lat(53°39'00"N) Long(004°46'00"W)

Lower Left: Lat(52°31'00"N) Long(008°11'00"W)

Lower Right: Lat(52°07'00"N) Long(005°33'00"W)



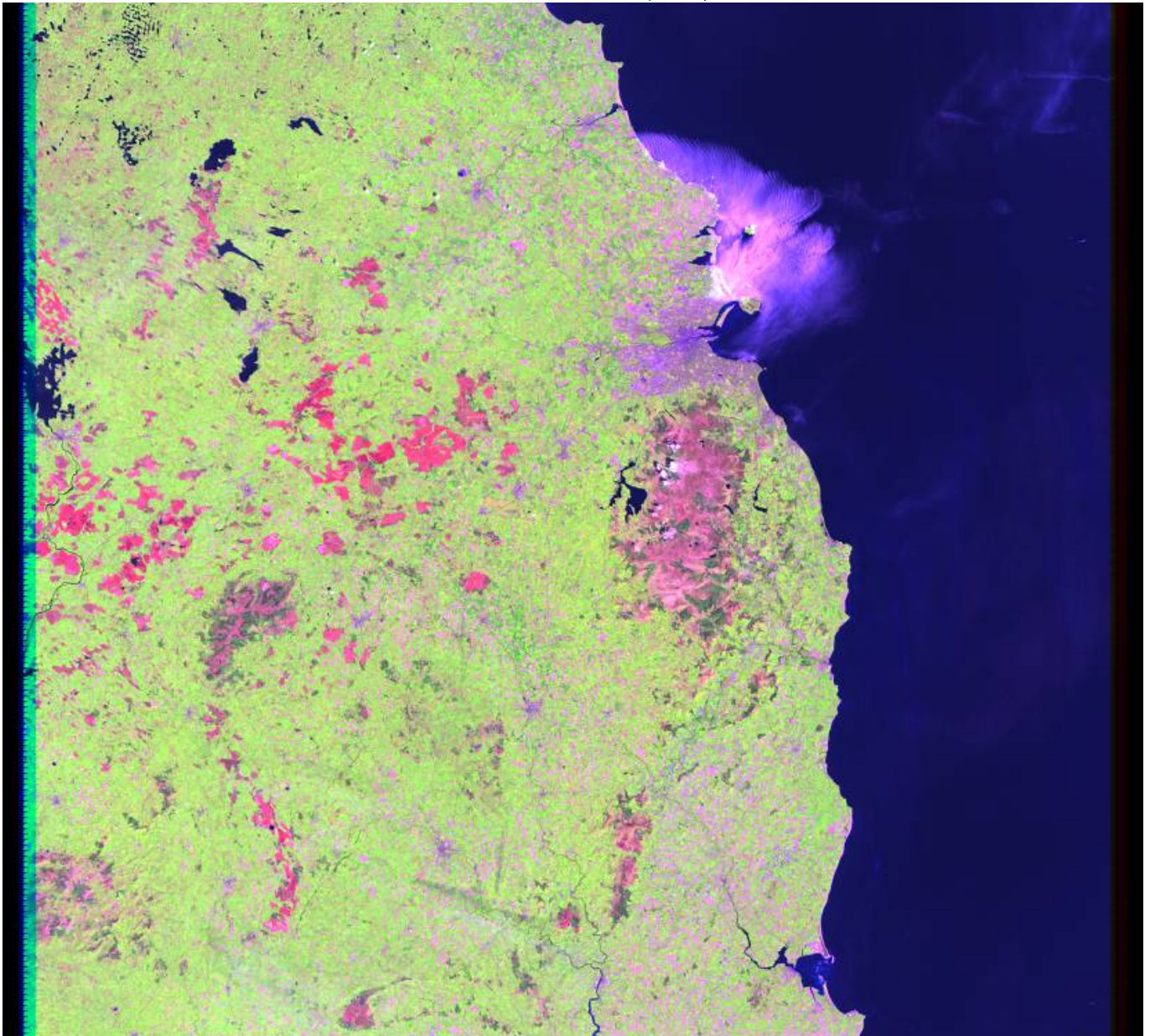
EURIMAGE (Clouds?)

Path: 206 Row: 23 Date: **1998/02/01** Time: 10:58:45

Landsat

Upper Left: Lat(54°03'00"N)	Long(007°33'00"W)
Upper Right: Lat(53°39'00"N)	Long(004°49'00"W)
Lower Left: Lat(52°31'00"N)	Long(008°13'00"W)
Lower Right: Lat(52°07'00"N)	Long(005°35'00"W)





entityID = 7206023000114450

lines = 750

samples = 825

path = 206

row = 23

SceneCc = 0

SCLat = 53.104000

SCLong = -6.704600

ULLat = 54.100300

ULLong = -7.745900

URLat = 53.684600

URLong = -4.908500

LRLat = 52.094900

LRLong = -5.716400

LLLat = 52.495400

LLLlong = -8.455200

SunAzi = 150.230896

SunElev = 54.962627

SceneCenterTime = 2001:144:11:12:43.7527490

LocalBrowseName = LE7206023000114450.jpg

FlightPath = D

DayNight = D

BrowseAvail = Y

AcqDate = 20010524

FullPartial = FullScene

RecStation = EDC

SceneStartTime = 2001:144:11:12:30.2685933

SceneStopTime = 2001:144:11:12:57.2917183

ImageQty1 = 9

ImageQty2 = 9

B1Gain = H

B2Gain = H

B3Gain = H

B4Gain = L

B5Gain = H

B6HGain = H

B6LGain = L

B7Gain = H

B8Gain = L

B1GainChg = 0

B2GainChg = 0

B3GainChg = 0

B4GainChg = 0

B5GainChg = 0

B6HGainChg = 0

B6LGainChg = 0

B7GainChg = 0

B8GainChg = 0

SubIntervalID = 40242

ETM7 2004-05-16 (with "striping")



entityID = 7206023000413751
lines = 1000
samples = 1100
path = 206
row = 23
SceneCc = 13
SCLat = 53.079400
SCLong = -6.729300
ULLat = 54.078000
ULLong = -7.769400
URLat = 53.662300
URLong = -4.932400
LRLat = 52.070200
LRLong = -5.740900
LLLat = 52.470800
LLLong = -8.479300
SunAzi = 150.959717
SunElev = 53.454487
SceneCenterTime = 2004:137:11:12:05.2327572
LocalBrowseName = LE7206023000413751.jpg
FlightPath = D
DayNight = D
BrowseAvail = Y
AcqDate = 20040516
FullPartial = FullScene
RecStation = EDC
SceneStartTime = 2004:137:11:11:51.6657500

SceneStopTime = 2004:137:11:12:18.8123750
ImageQlty1 = 9
ImageQlty2 = 9
B1Gain = H
B2Gain = H
B3Gain = H
B4Gain = L
B5Gain = H
B6HGain = H
B6LGain = L
B7Gain = H
B8Gain = L
B1GainChg = 0
B2GainChg = 0
B3GainChg = 0
B4GainChg = 0
B5GainChg = 0
B6HGainChg = 0
B6LGainChg = 0
B7GainChg = 0
B8GainChg = 0
SubIntervalID = 126879
GapPhaseStat = -.3789
GapPhaseSrc = DE